



CamSpec M508 UV-Vis Spectrophotometer

The CamSpec M508 is a UV-Vis single beam basic programmable spectrophotometer. Wipe clean membrane keypad for labs that are hard to keep clean. Stores 2000 test methods/results. Concentration calibration up to 8 standards. 3 replicates, linear fit or linear fit through zero curves. Includes x4 glass cells (10mm) and x2 quartz cells (10mm).



CONFORMITY

Calibrated in the UK using wavelength, absorbance, resolution and stray light international standards by qualified engineers. References should be chosen whose calibrated values "bracket" the conditions to be used for analysis. While regulators like the Pharmacopoeias may recommend certain references, any Certified Reference Material with appropriate certified values may be used for qualification.

PC CONTROL VIA SOFTWARE

The M508 has a USB output for the transfer of results and for remote PC control. Data output includes method number and name, wavelength, %T, Abs, date and time. Comprehensive CamSpec K3 Analyst application software is available, together with small PC programs, dedicated to specialist tasks.

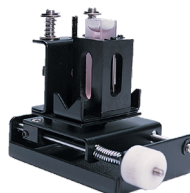
USER INTERFACE

Operations include:

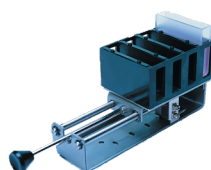
- Basic Mode (Abs, %T, Conc)
- Quantitative
- Kinetics (Via Software)
- DNA/Protein

ACCESSORIES

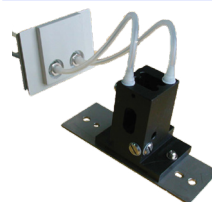
The CamSpec M508 has a large sample compartment that fits a selection of available accessories for automation and specific tests.



Adjustable Micro Cell Holder
PART NO: 501-102



Manual 4-Position Cell Changer (5-50mm)
PART NO: 501-104



Thermostatted Cell Holder (10mm)
PART NO: 508-105



Test Tube Holder with Base (8-25mm Diameter)
PART NO: 501-101



CamSpec M508 UV-Vis Spectrophotometer



Peltier/Sipper System
Combined
PART NO: 501-124

HEAR FROM OUR CUSTOMERS

"We've had great service. Mark and Paul are always easy to get hold of, and do the job excellently. They go above and beyond - in fact they've even tailored their software to a particular need we had in the past, which was extremely useful to us."

Paul Douglas, Teesside University

"We work with you because you've always gone above and beyond to give us perfect service, and we've never been disappointed. We know if we have an emergency you are only a phone call away, and always attentive and helpful."

Beverly McGrath, Liverpool John Moores University

FREQUENTLY PURCHASED WITH

- K3 Analyst Software (108-110)
- 5-50mm x4 Cell Holder (501-104)
- Thermostatted 10mm Cell Holder - Requires Water Bath (501-105)
- 100mm x4 Cell Holder (501-103)
- Bluetooth Printer (330-500)

TECHNICAL SPECIFICATIONS

Display:	Two-line, 9-digits
Light Source:	Tungsten Halogen and Deuterium Lamp
Monochromator:	Single beam, grating system 1200 lines/nm
Detectors:	Silicon Photodiode
Wavelength Range:	325-1100nm
Wavelength Accuracy:	±2nm
Wavelength Repeatability:	≤1nm
Wavelength Display:	1nm
Stability:	±0.002A/hr@500nm
Sample Compartment:	Fits 100mm path length cuvette with optional holder
Standard Cell Holder:	4 position 10mm cell changer
Software:	K3 Analyst, optional

Zero Drift:	<0.003A per hour after warm up
Bandpass:	2nm
Stray Light:	<0.2%T@220nm and 360nm
Photometric Accuracy:	±0.5%T
Photometric Range:	0-125%T, -0.097-1.999A, 0-1999C (0-1999F)
Printer Interface:	Bluetooth
Computer Interface:	USB for PC control and USB for data export
Power Requirements:	90V-250V AC, 50Hz/60Hz
Instrument Dimensions (l x w x h):	510x420x210
Instrument Weight:	11.7kg
Shipping Dimensions (l x w x h):	650x550x390mm
Shipping Weight:	13.5kg